

# 12W MECHANICAL PUMPS

*...for the private fuel user.*

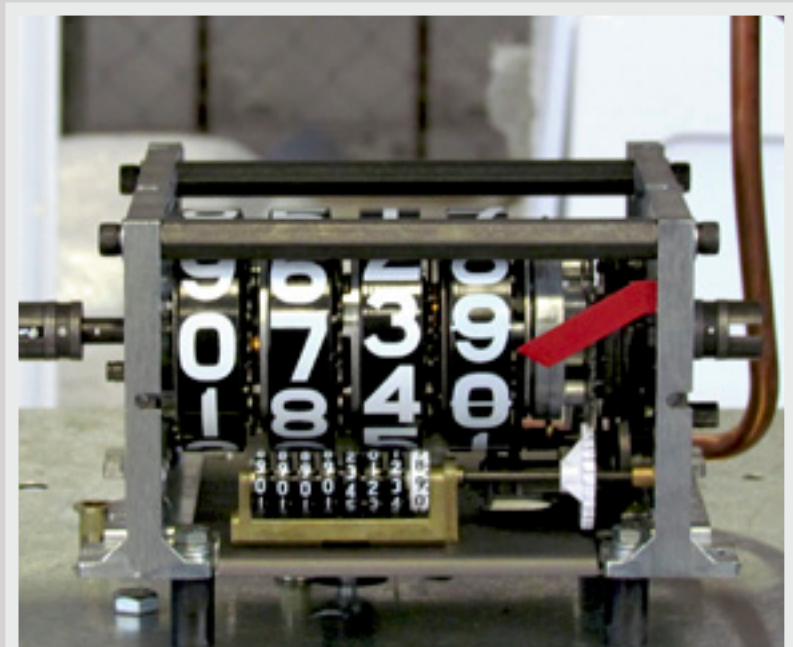


## ROBUST DESIGN - PROVEN ENGINEERING

- Micro-accurate Wayne 2PM-6 2-piston meter
- Wayne Compact pumping unit
- Veeder-Root mechanical register with non-resettable totaliser

## 12W HEAVY DUTY ELECTRIC PUMPS

- High capacity - high speed delivery.
- .55KW 220volt flameproof continuous heavy duty electric motor
- Delivery flow rate:  
Nominal 70 litres per minute through a 1" hose & nozzle.
- Zero-reset handle is situated on the side panel.
- Open-frame register records up to 999.9 litres per delivery.
- Also available with high speed constantly-engaged emergency hand drive for use in power outages.
- Dimensions: 1234mm (h) x 538mm (w) x 412.5mm (d).



## PERFECT FOR...

- ✓ Trucking companies
- ✓ Mines
- ✓ Municipalities and Government departments
- ✓ Construction and Road works
- ✓ Agriculture
- ✓ Chemical industries

In fact, all non-public fuelling environments.

## SAMD - Southern Africa Master Distributors (PTY) Ltd

### HEAD OFFICE & FACTORY:

Units 2 & 3, Spurwing Park, Capricorn Boulevard North, Capricorn Park, Muizenberg, Cape Town, South Africa.  
Tel: +27 (0)21 788 2212 | Fax: +27 (0)21 788 6174 | Web: [www.petrolpumps.co.za](http://www.petrolpumps.co.za)

DISTRIBUTED BY: